

USEFUL INFORMATION

HOW TO SELECT A TYRE

Tyre size and maximum speed of the vehicle.
The maximum load capacity per axle (Load index).
Your style driving and road condition.

MOUNTING & DISMOUNTING

Only get trained people mounting and dismounting your tyres.

TYRE PRESSURE

For safe drive, it is extremely important to drive with the right pressure.

CHECK FOLLOWING ITEMS IN REGULAR WAY

Tread Pattern

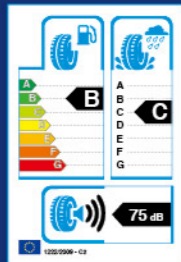
Unusual wear, tread groove separation, bulges.. etc.

Sidewall

Impact, Bulges, Ozone cracking, vehicle contact damage etc.

Pressure

The inflated pressure will be changed during long driving and changed circumstances temperature.



DISTRIBUTED BY

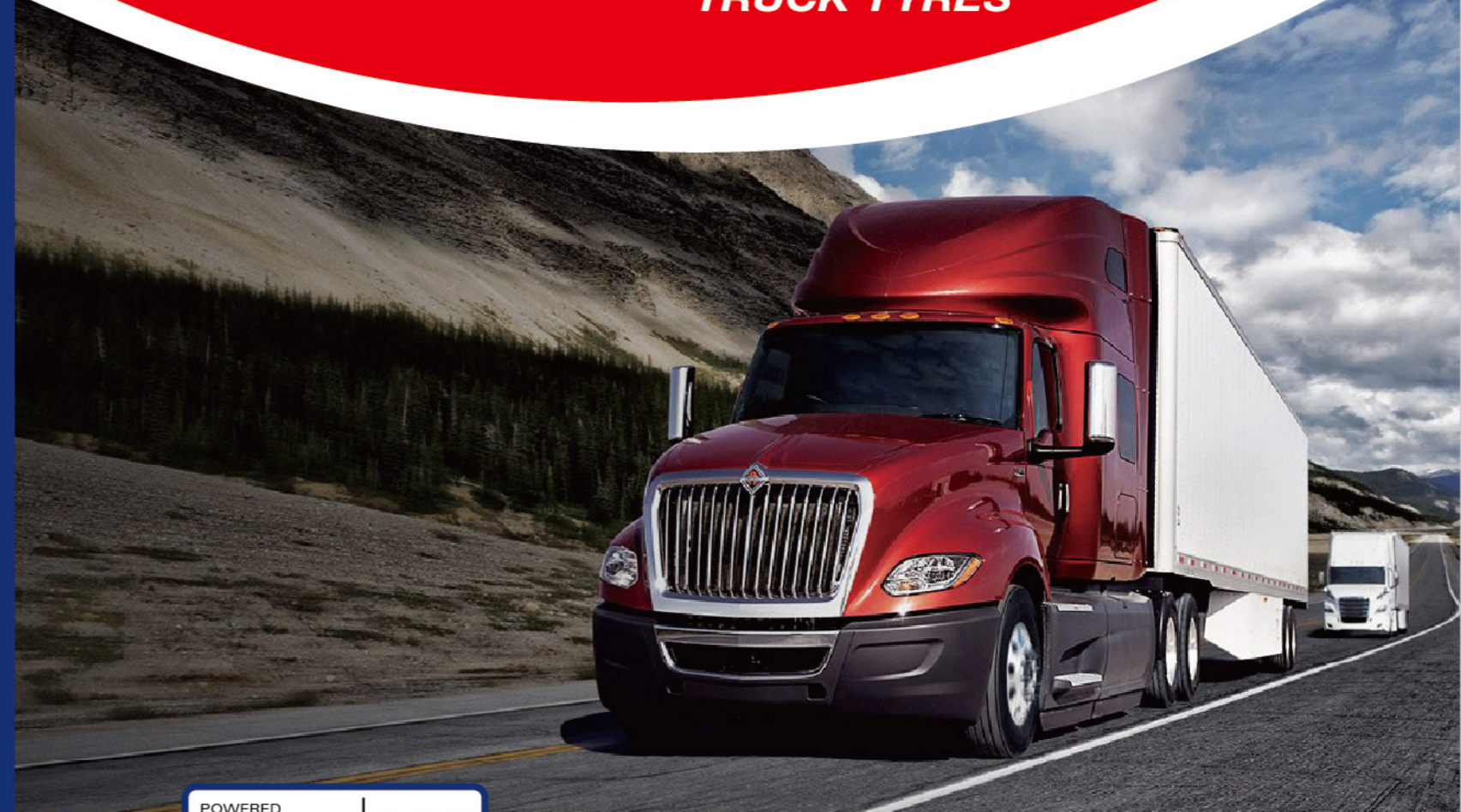
www.sd-international.com

These data can be changed by the manufacturer without prior notice and differently applied by regions.

Printed on Oct. 2021

ZETA

TRUCK TYRES



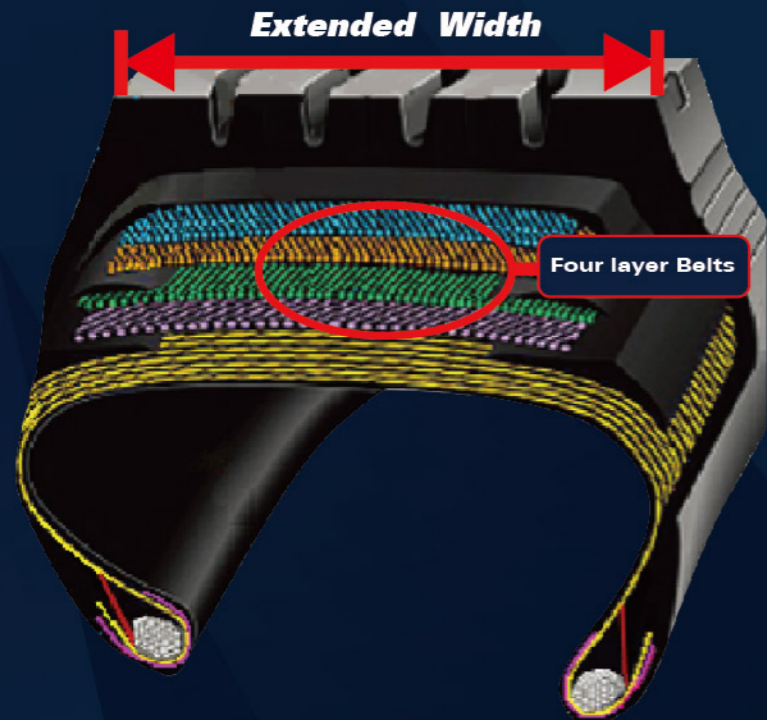
POWERED
BY PERFORMANCE
www.zeta-tyres.com



2021 PRODUCT
MANUAL

ZETA TBR THAI CATALOGUE

PRODUCT CHARACTER

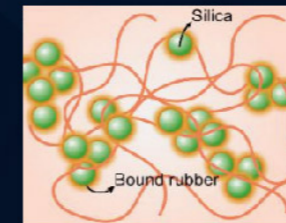


Design Feature ①

Widened tread design ensures the more load and comfortable handling performance.

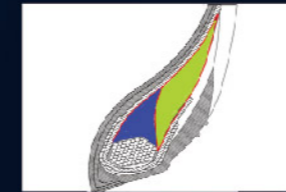
The four-layer belts structure provides tires with excellent high-speed performance, durability and comfort performance.

Special Tread structure design strengthens the product's stability and elongs the using mileage.



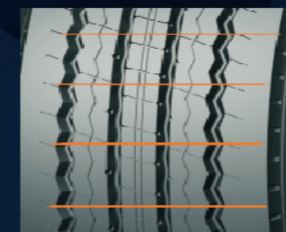
Design Feature ②

High-performance formula application, providing tires with excellent wear resistance and excellent wet skid resistance.



Design Feature ③

Soft/Hard rubber combination on the bead can improve the load capacity especially.



Design Feature ④

The variable pitch pattern design effectively reduces the tire noise



Design Feature ⑤

Self-cleaning block design can effectively decrease the damage to the bottom of grooves from the stones.

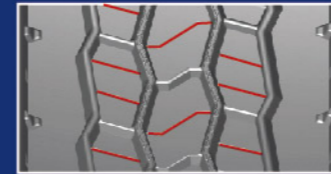
Z-TRAC

Suitable for drive position on highway and paved road.

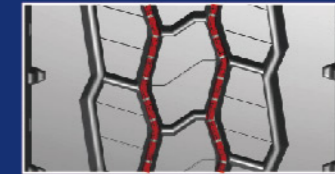


Z-TRAC

Design Feature



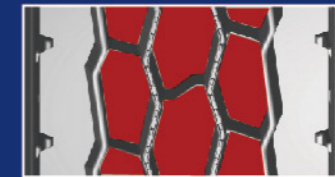
The small sipes on the tread block can improve the wet skid resistance



The protrusions at the bottom of the groove effectively improve the self-cleaning properties of the tire.



Shoulder grooves are good for tire heat dissipation.



The deepened block pattern effectively gives the tires excellent driving and braking performance, and increases the mileage.

Size	PR	LI/SI	OD (mm)	SW (mm)	TD		TW (mm)	Rim	Max Load				Pressure	
					(mm)	(32nd)			Single		Dual		kpa	psi
									(kg)	(lbs)	(kg)	(lbs)		
11R22.5	16(H)	148/145M	1065	279	22.2	28.0	220	8.25	3150	6940	2900	6395	850	123
11R24.5	16(H)	149/146M	1116	279	22.2	28.0	220	8.25	3250	7160	3000	6610	825	120
295/75R22.5	14(G)	144/141M	1026	297	22.2	28.0	230	9.00	2800	6170	2575	5675	760	110
295/75R22.5	16(H)	146/143M	1026	297	22.2	28.0	230	9.00	3000	6610	2725	6005	825	120



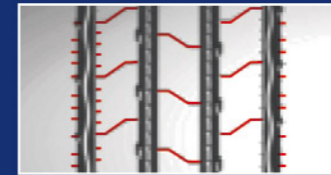
Z-PILOT

Suitable for Steer or trailer on highway and paved road.



Z-PILOT

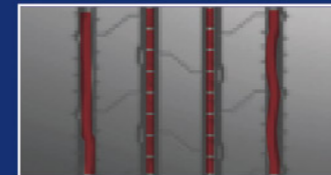
Design Feature



Small horizontal sipes provide good anti-slip performance.



The wide shoulder design increases the rigidity of the tire shoulder and improves the wear resistance of the tire.



The rubber bumps at the bottom of the groove and the S-shaped grooves effectively improve the self-cleaning property of the tire.



Small grooves on the edges of the blocks help improve the traction performance of the tire.

Size	PR	LI/SI	OD (mm)	SW (mm)	TD		TW (mm)	Rim	Max Load				Pressure	
					(mm)	(32nd)			Single		Dual		kpa	psi
									(kg)	(lbs)	(kg)	(lbs)		
11R22.5	16(H)	148/145M	1054	279	14	17.6	220	8.25	3150	6940	2900	6395	850	123
11R24.5	16(H)	149/146M	1100	279	14	17.6	220	8.25	3250	7160	3000	6610	825	120
295/75R22.5	14(G)	144/141M	1014	297	14	17.6	226	9.00	2800	6170	2575	5675	760	110
295/75R22.5	16(H)	146/143M	1014	297	14	17.6	226	9.00	3000	6610	2725	6005	825	120

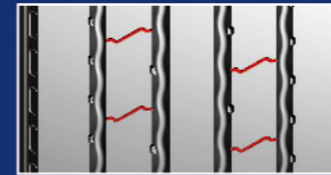
Z-CONTA

Suitable for special trailer on highway and paved road.

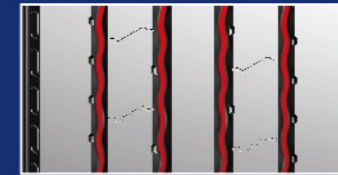


Z-CONTA

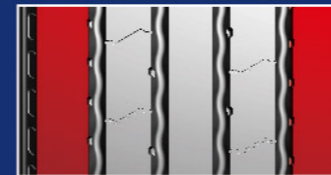
Design Feature



Small horizontal sipes and notches on the ribs provide good anti-slip performance



Four S-shaped grooves effectively improve the self-cleaning property of the tire.



The wide shoulder design increases the rigidity of the tire shoulder and improves the wear resistance of the tire.



The simple pattern design effectively reduces the tire rolling resistance.

Size	PR	LI/SI	OD (mm)	SW (mm)	TD		TW (mm)	Rim	Max Load				Pressure	
					(mm)	(32nd)			Single		Dual		kpa	psi
									(kg)	(lbs)	(kg)	(lbs)		
11R22.5	16(H)	148/145M	1054	279	10.3	13.0	212	8.25	3150	6940	2900	6395	850	123
295/75R22.5	14(G)	144/141M	1014	297	10.3	13.0	215	9.00	2800	6170	2575	5675	760	110



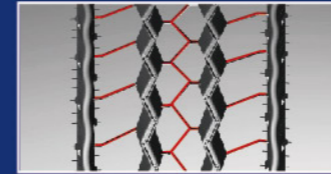
Z-MILES

Suitable for all position on highway and paved road.



Z-MILES

Design Feature



Small horizontal sipes provide good anti-slip performance



The wide shoulder design increases the rigidity of the tire shoulder and improves the wear resistance of the tire.



The rubber bumps at the bottom of the groove and the S-shaped grooves effectively improve the self-cleaning property of the tire.



The zigzag and lines grooves provide the good traction and high speed performance.

Size	PR	LI/SI	OD (mm)	SW (mm)	TD		TW (mm)	Rim	Max Load				Pressure	
					(mm)	(32nd)			Single (kg)	Dual (kg)	(lbs)	(lbs)	kpa	psi
215/75R17.5	16(H)	135/133L	767	211	12.5	15.7	183	6.00	2180	4805	2060	4540	850	123
225/70R19.5	14(G)	128/126M	811	226	14	17.6	183	6.75	1800	3965	1700	3745	830	120
235/75R17.5	18(J)	143/141L	797	233	12.5	15.7	185	6.75	2725	6005	2575	5675	875	127
245/70R17.5	18(J)	143/141K	789	248	12.5	15.7	200	7.50	2725	6005	2575	5675	875	127
245/70R19.5	16(H)	135/133M	839	248	14	17.6	200	7.50	2575	5675	2500	5510	830	120
255/70R22.5	16(H)	140/137M	930	255	14	17.6	200	7.50	2500	5510	2300	5070	830	120



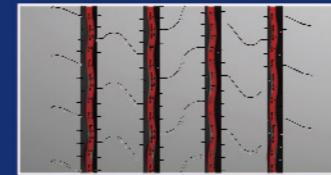
Z-LINES

Suitable for Steer or trailer on highway and paved road.

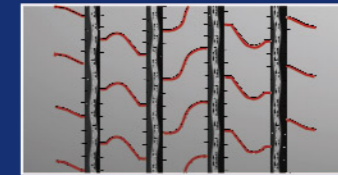


Z-LINES

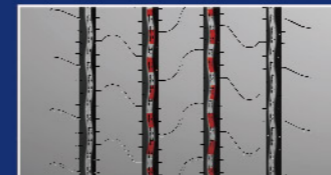
Design Feature



Four longitudinal linear grooves provide excellent high-speed performance and low noise performance



The application of tortuous thin grooves provides excellent drainage and grip performance.



The rubber bump at the bottom of all grooves effectively improves the self-cleaning property of the tire.



The wide shoulder design increases the rigidity of the tire shoulder and improves the wear resistance of the tire.

Size	PR	LI/SI	OD (mm)	SW (mm)	TD		TW (mm)	Rim	Max Load				Pressure	
					(mm)	(32nd)			Single		Dual		kpa	psi
									(kg)	(lbs)	(kg)	(lbs)		
295/80R22.5	18(J)	154/149M	1044	298	15	18.9	246	9.00	3750	8270	3250	7160	850	123
315/70R22.5	18(J)	156/150L (152/148M)	1014	312	15	18.9	256	9.00	4000	8820	3350	7390	900	130
315/80R22.5	20(L)	156/150L (154/150M)	1076	312	15	18.9	256	9.00	4000	8820	3350	7390	850	123



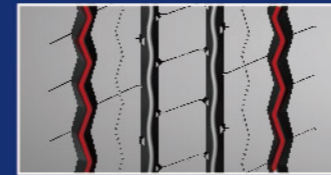
Z-TRANS

Suitable for all position on highway and paved road.

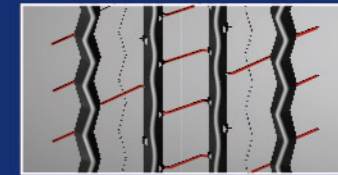


Z-TRANS

Design Feature



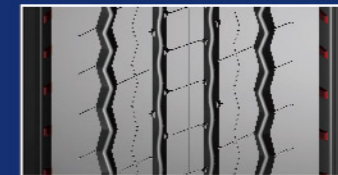
The zigzag grooves on both sides provide the good traction performance during high speed running



The application of horizontal fine grooves provides excellent drainage and grip performance.



The wide shoulder design increases the rigidity of the tire shoulder and improves the wear resistance of the tire.



The grooves design under the shoulder side can improve the heat generation performance.

Size	PR	LI/SI	OD (mm)	SW (mm)	TD		TW (mm)	Rim	Max Load				Pressure	
					(mm)	(32nd)			Single		Dual		kpa	psi
									(kg)	(lbs)	(kg)	(lbs)		
385/55R19.5	18(J)	156J	919	386	16	20.2	308	12.25	4000	8820	-	-	900	130
385/55R22.5	20(L)	164K(158L)	996	386	16	20.2	308	12.25	4500	9920	-	-	900	130
385/65R22.5	20(L)	164K	1072	389	15	18.9	316	11.75	5000	11000	-	-	900	130



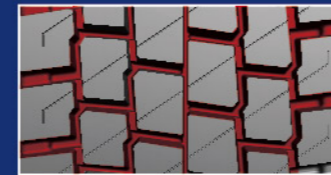
Z-CROSS

Suitable for drive on highway and paved road.

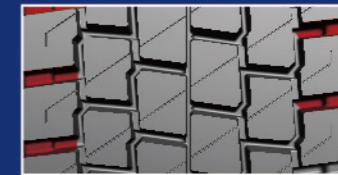


Z-CROSS

Design Feature



Application of crisscross trenches gives excellent traction, braking and anti-hydroplaning performance.



Open shoulder design increases the shoulder heat dissipation.



The thin sipes on the block can effectively promote the skid resistance.



The design of wider footprint strengthens grip performance and offers longer mileage.

Size	PR	LI/SI	OD (mm)	SW (mm)	TD		TW (mm)	Rim	Max Load				Pressure	
					(mm)	(32nd)			Single		Dual		kpa	psi
									(kg)	(lbs)	(kg)	(lbs)		
295/80R22.5	18(J)	152/148M	1044	298	20	25.2	256	9.00	3550	7830	3150	6940	850	123
315/70R22.5	18(J)	154/150L (152/148M)	1014	312	21	26.5	260	9.00	3750	8270	3350	7390	900	130
315/80R22.5	20(L)	156/150L (154/150M)	1076	312	21	26.5	262	9.00	4000	8820	3350	7390	850	123